

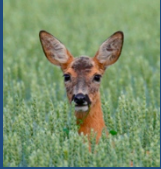


## PhD theses with research performed at Tovetorp Research Station



*If not otherwise stated dissertations are made at  
Department of Zoology, Stockholm University*

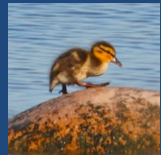
### 1970 – 1979



1. **Yngve Espmark:** Mother-young relations and development of behaviour in roe-deer (*Capreolus capreolus* L.).



2. **Anders Bjärvall:** Nest-exodus behaviour and nest-site selection of the mallard.



3. **Tommy Radesäter:** Ethological studies on the triumph ceremony of the Canada goose (*Branta canadensis* L.) - with special reference to ontogeny and causation.

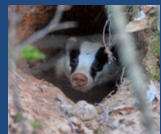


4. **Thorsten Klint:** Factors contributing to mate selection in female mallards (*Anas platyrhynchos* L.) - with particular emphasis on the role of the male nuptial plumage.

5. **Sverre Sjölander:** Reproductive behaviour of the divers (Gaviidae).

6. **Greta Ågren:** Sociosexual behaviour in the Mongolian gerbil *Meriones unguiculatus*. Interactions between gonadal hormones and social relationships.

### 1980 – 1989



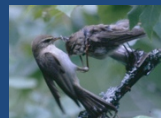
7. **Hans Ahnlund:** Aspects of the population dynamics of the badger (*Meles meles* L.).

8. **Bengt Lindlöf:** Some aspects of ecology in hares.

9. **Åke Pehrson:** Intake and utilization of winter food in the mountain hare (*Lepus timidus* L.).



10. **Olavi Grönwall:** Aspects of the food ecology of the red squirrel (*Sqiurus vulgaris* L.).



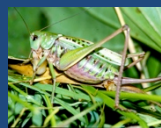
11. **Torbjörn Järvi:** On the evolution of inter- and intraspecific communication through natural and sexual selection.

12. **Sven Jakobsson:** Male behaviour in conflicts over mates and territories.



13. **Hans Temrin:** Polyterritorial behaviour and polygyny in the wood warbler (*Phylloscopus sibilatrix* Bechst.).

### 1990 – 1999



14. **Lennart Edsman:** Territoriality and competition in wall lizards.

15. **Kerstin Holmberg:** Mallard ducks, mate choice and breeding success.

16. **Thorleifur Eiriksson:** Female response and male singing strategies in two orthopteran species.

17. **Nina Wedell:** Evolution of nuptial gifts in bushcrickets.

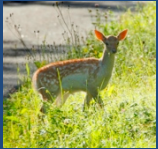
18. **Anders Brodin:** Time aspects on food hoarding in the willow tit - an evolutionary perspective.



19. **Johanna Mappes:** University of Jyväskylä: Maternal care and reproductive tactics in shield bugs.



20. **Kerstin Malm:** Sveriges Lantbruksuniversitet i Skara: Behaviour of parents and offspring in two canids.



21. **Thord Fransson:** Time and energy in long distance bird migration.

22. **Kristjan Lilliendahl:** Fattening strategies in wintering passerines.

23. **Björn Birgersson:** Maternal investment in male and female offspring in the fallow deer.

24. **Cecilia Kullberg:** Behaviour under predation risk in birds.

25. **Tommaso Pizzari:** University of Sheffield: Reproductive strategies in feral fowl, *Gallus gallus*.



26. **Anna Thessing:** Genetic and environmental factors influencing growth and survival in willow tits *Parus montanus*.

27. **Kenneth Ekvall:** Alloparental care and social dynamics in the fallow deer (*Dama dama*).

28. **Kenneth Nyström:** Göteborgs uiniversitet: Foraging in relation to aspects of morphology, body condition, reproduction, and habitat variability in three bird species.



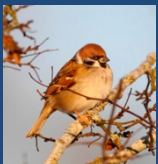
29. **Katariina Kiviniemi:** Botaniska institutionen, Stockholms Universitet: Evolution of seed attributes, dispersal and population dynamics of plants, with special emphasis on fragmented habitats.



### 2000 – 2009



30. **Olle Brick:** Risk assessment and contest behaviour in the Cichlid fish, *Nannacara anomala*.



31. **Maria Andersson:** Sveriges Lantbruksuniversitet i Skara: Domestication effects on behaviour.

32. **Annkristin H. Axén:** Behaviour of Lycaenid butterfly larvae in their mutualistic interactions with ants.

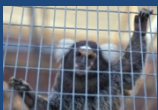


33. **Karin Schütz:** Sveriges Lantbruksuniversitet i Skara: Trade-off in resource allocation between behaviour and production in fowl.

34. **Ulf Norberg:** Evolution of dispersal and habitat exploration in butterflies.

35. **Johan Lind:** Adaptive body regulation in the life history of birds.

36. **Henrik Lange:** Social dominance and agonistic communication in the great tit.



37. **Susanna Hall:** Moulting strategies in relation to migration in long-distance migrants.

38. **Karolina Westlund:** On post-conflict affiliation in humans and other primates - methodological considerations.



39. **Jonas Bergström:** The evolution of mating rates in *Pieris napi*.

40. **Charlie Cornwallis:** University of Sheffield: The reproductive tactics of male and female fowl, *Gallus gallus*.

41. **Anders Bergström:** Oviposition strategies in butterflies and consequences for conservation.

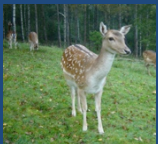
42. **Ulrika Kaby:** Attacking predators and fleeing prey: detection, escape and targeting behaviour in birds.



43. **Adrian Vallin:** On the protective value of conspicuous eyespots in Lepidoptera.



44. **Ulrika Alm Bergvall:** Food choice in fallow deer - experimental studies of selectivity.



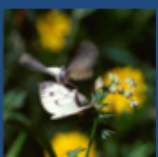
45. **Hanne Løvlie:** Pre- and post-copulatory sexual selection in the fowl, *Gallus gallus*.



46. **Leena Arvanitis:** Botaniska institutionen Stockholms Universitet: Plant polyploidy and interactions with insect herbivores.

47. **Karin Enfjäll:** Mobility and emigration in butterflies.

48. **Maria Almbro:** Escape flight in butterflies.

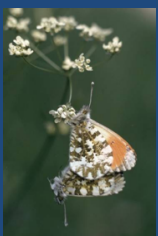


49. **Ian Henshaw:** Avian migration: the role of geomagnetic cues.

50. **Marina Dimitrova:** Prey detection and natural selection on cryptic colouration.

51. **Magne Friberg:** The evolutionary ecology of niche separation studies on the sympatric butterflies *Leptidea sinapis* and *Leptidea reali*.

52. **Rebecca Dean:** University of Oxford: Male ageing and sexual selection in the fowl.



## 2010 – 2017

53. **Martin Bergman:** The evolution of territoriality in butterflies.

54. **Aleksandra Johansen:** Seasonal change in defensive colouration in a shield bug.

55. **Mark Baynes:** University of Oxford: Strategic sperm allocation in the fowl *Gallus gallus*.

56. **Marianne Aronsson:** Colour patterns in warning displays.



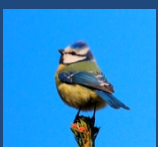
57. **Jannika Boström:** Lund University: Magnetic map sense in animals: effects of geographic and magnetic displacements.

58. **Andreas Rudh:** Uppsala University: Aposematism, Crypsis and population differentiation in the Strawberry poison frog.



59. **Martin Olofsson:** Antipredator defense in butterflies.

60. **Johanna Hedlund:** Climate change effects on migratory birds and on the ecology and behaviour of the willow warbler (*Phylloscopus trochilus*).



61. **Robert Stach:** Migratory routes and stopover behaviour in avian migration.

62. **Sandra Stålhandske:** Spring Phenology of Butterflies – The role of seasonal variation in life-cycle regulation.

63. **Tenna Toftegaard, DEEP:** Temperature and the synchrony of plant-insect interactions.

64. **Anna Favati:** The relationship between personality and social dominance – a critical perspective.

65. **Baharan Kazemi:** Evolution of mimicry and aposematism explained: Salient traits and predator psychology.